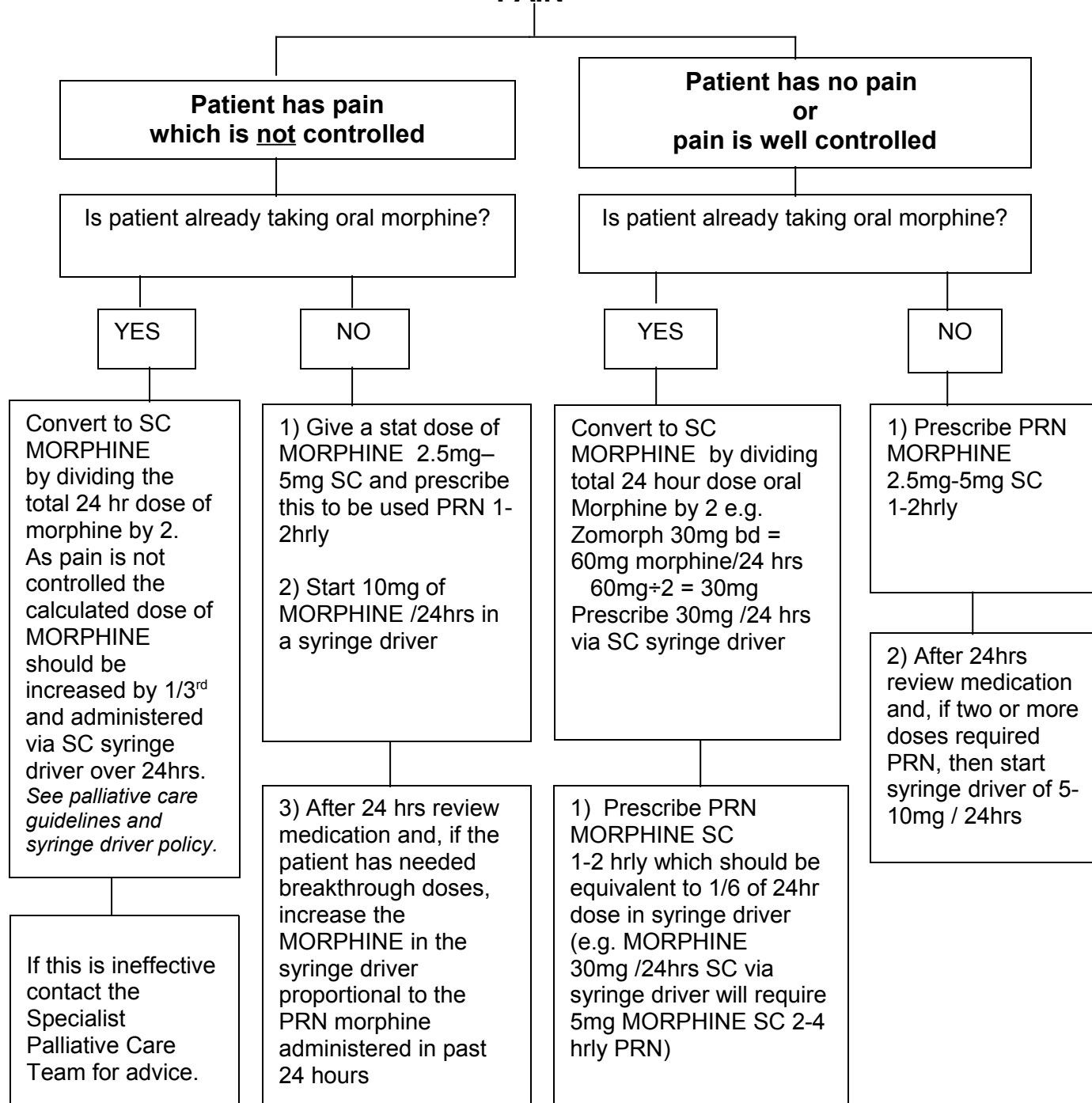


Anticipatory Medications for End of Life Patients

Doses must be proportional to the current analgesic medication

- Please refer **ALL** patients on Methadone or Ketamine to palliative care team for advice.
 - Patients on Fentanyl should continue patch in addition to following guidelines.
 - Please do not stop opiates in patients who are taking them regularly.

PAIN



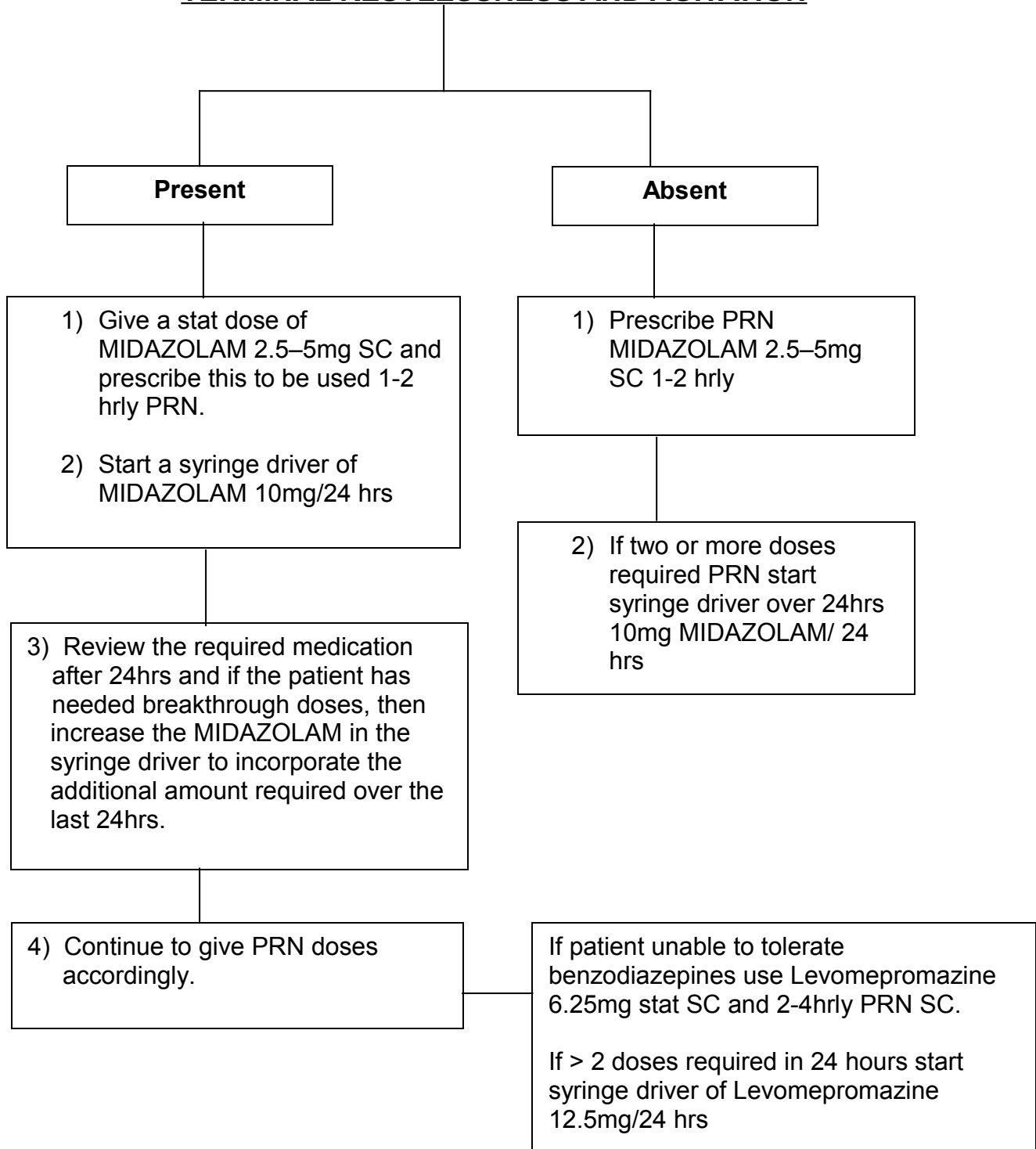
To convert from other strong opioids to a syringe driver please contact the Palliative Care Team or Pharmacy for advice.

Palliative Care Team 7 days/week 9-5 Ext 3227 or DECT 7181
Out of hours Palliative Care Advice Line 07623 916125

Anticipatory Medications for End of Life Patients

Doses must be proportional to the current benzodiazepine medication

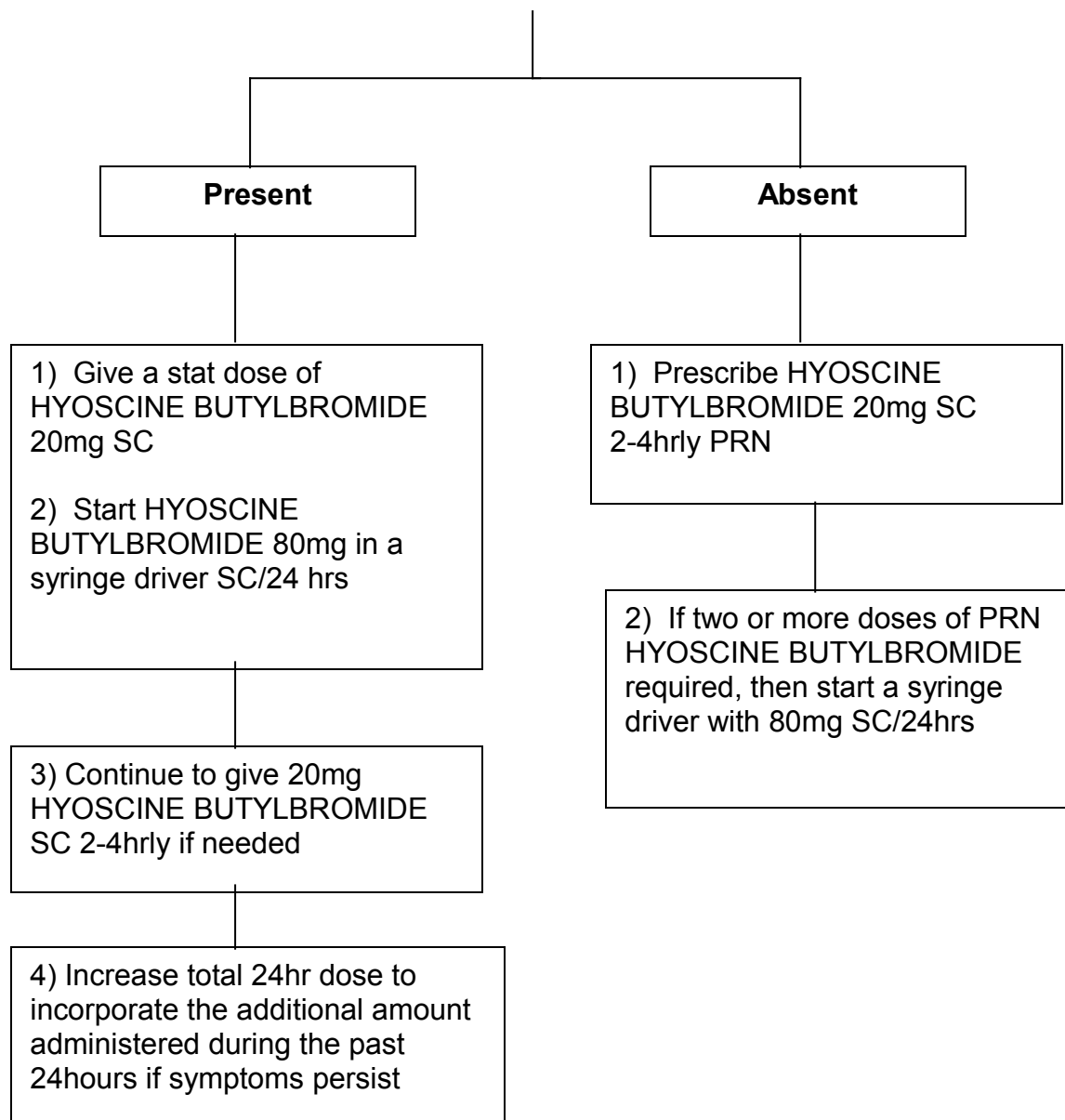
TERMINAL RESTLESSNESS AND AGITATION



For further advice please contact the Palliative Care Team or Pharmacy for advice.

NNUH Palliative Care Team 7 days / week 9-5 Ext 3227 or DECT 7181
Out of hours Palliative Care Advice Line 07623 916125

RESPIRATORY TRACT SECRETIONS



- Avoid using Hyoscine in patients with severe cardiac failure this can increase arrhythmias.
- For patients with severe cardiac failure use Glycopyrronium Bromide 200 micrograms stat and 600micrograms/24 hours via syringe driver

For further advice please contact the Palliative Care Team or Pharmacy for advice

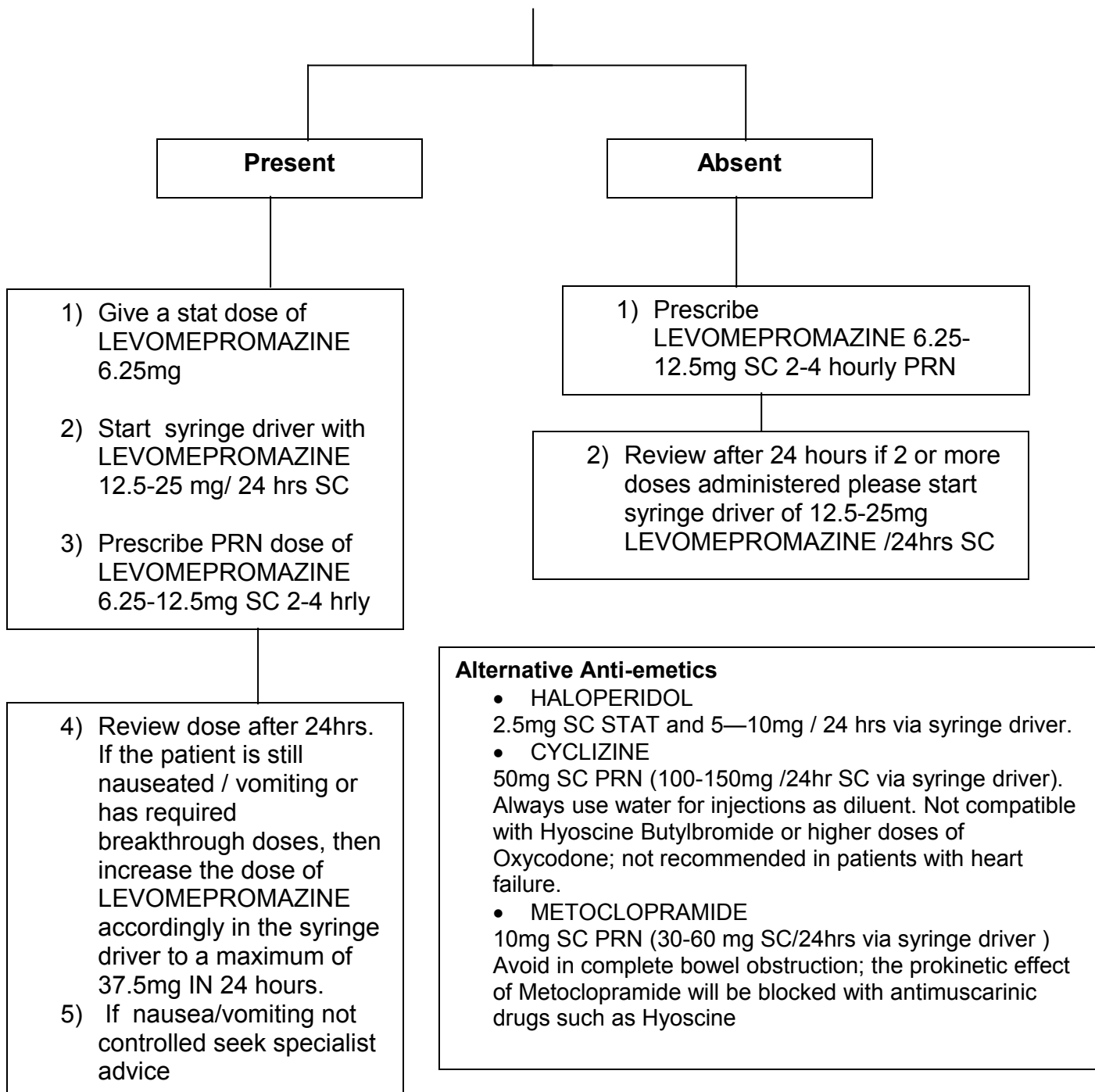
NNUH Palliative Care Team 7 days/ week 9-5 Ext 3227 or DECT 7181
Out of hours Palliative Care Advice Line 07623 916125

Anticipatory Medications for End of Life Patients

D

Doses must be proportional to the current anti-emetic medication

NAUSEA AND VOMITING



For further advice please contact the Palliative Care Team or Pharmacy for advice

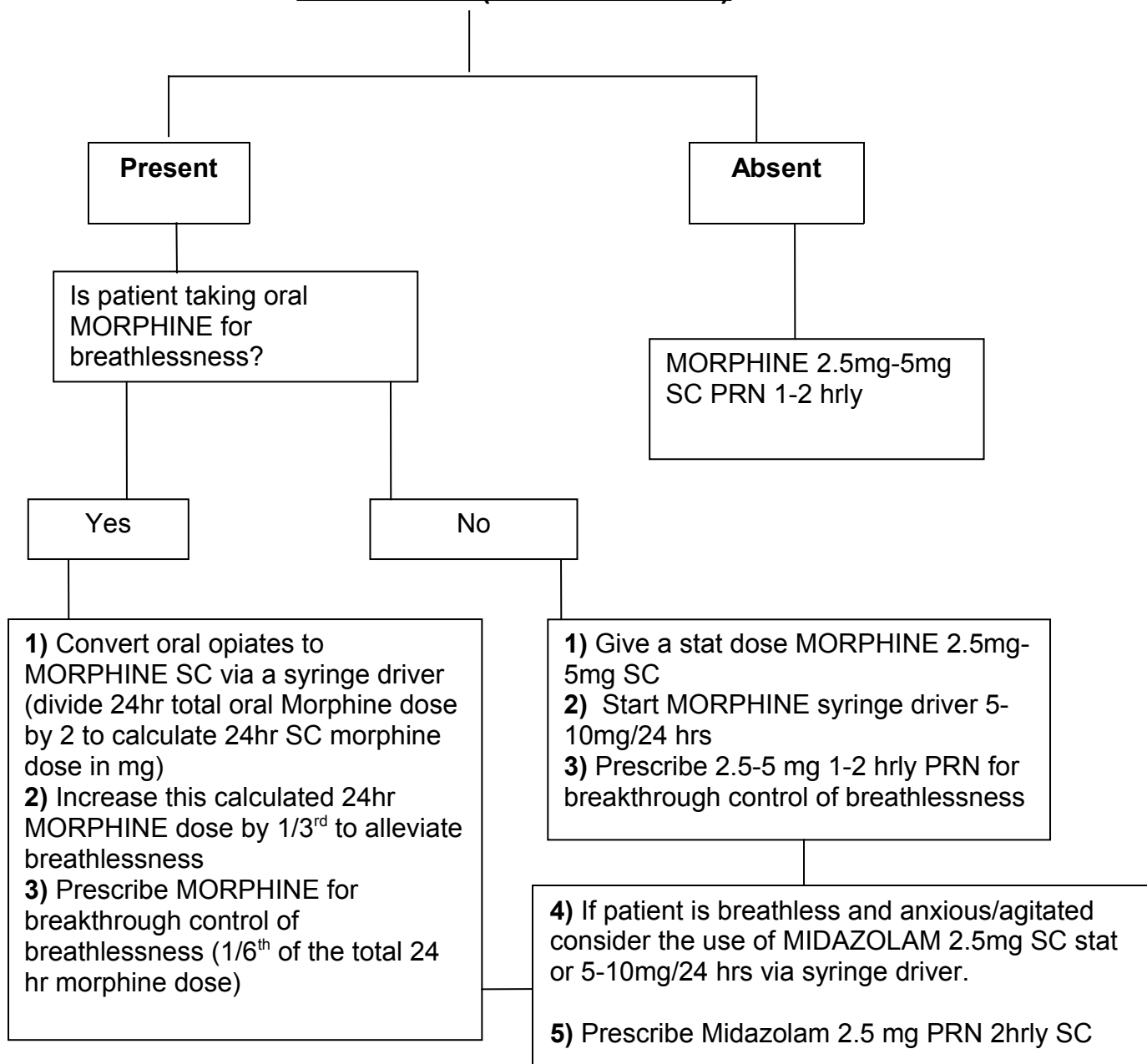
NNUH Palliative Care Team 7 days/week 9-5 Ext 3227 or DECT 7181
Out of hours Palliative Care Advice Line 07623 916125

Anticipatory Medications for End of Life Patients

D

Doses must be proportional according to current opiate/ benzodiazepine medication

DYSPNOEA (Breathlessness)



For further advice please contact the Palliative Care Team or Pharmacy for advice

NNUH Palliative Care Team Mon-Fri 9-5 Ext 3227

Out of hours Palliative Care Advice Line 07623 916125