

Audiology Department

Bone Conduction Hearing Implant (BCHI) Pre-Surgical Planning

Ear, Nose and Throat Out-Patients Appointment

The Ear, Nose and Throat Consultants are Mr Hanif and Mr Prinsley. An appointment will be arranged to meet them and discuss the surgery and aftercare.



MR HANIF

MR PRINSLEY

To make sure that your fixture/abutment is put in the best place behind your ear, we offer a pre-surgical planning appointment. Please bring any head wear that you regularly use, e.g. glasses, safety helmet, cycling helmet, etc.

What to expect at the planning appointment:

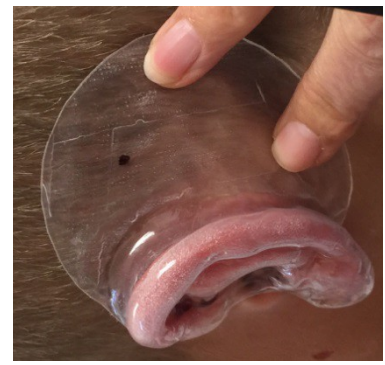
We will gently tape your hair using surgical tape to expose the ear and to protect the hair from the impression material.

Impression material will be placed around the ear and left to set for around 3 minutes.



The impression is then made into a splint of the ear.

The best position for the processor is measured and marked on the splint. The splint is used in theatre as a guide for the surgeon.



You can choose the colour of the processor at the planning appointment if you have not already done so.

What to expect on the day of surgery

You will be contacted by the hospital with a surgical date. You will be given information on your diet prior to surgery and what to expect when you arrive at hospital. The surgery itself takes approximately 30 minutes. You are usually treated as a day case but sometimes an overnight stay may be needed.



You will have a dressing and a healing cap placed over the implant site when you leave surgery. This needs to stay on and **must not get wet** until after your outpatient appointment in the Ear, Nose and Throat (ENT) clinic.

Healing cap over abutment

After surgery

An Ear, Nose and Throat clinic appointment will be arranged 7-14 days after surgery. The abutment site will be checked and an abutment stability measurement will be taken. Once the ENT team are happy that the site is stable and has healed well, we can arrange fitting of the processor. This usually happens 6-8 weeks after surgery.

Fitting the processor

You will be seen by one of the BCHS Team in Audiology for a fitting appointment. In this appointment the processor will be loaded onto the abutment. Hearing tests will be performed to ensure it is set appropriately.

Contact Details for Audiology Department

Direct Dial: 01603 287284/288917 (Monday to Friday 8.00am to 5.00pm)

Direct Fax: 01603 288946

E-mail: audioadmin@nnuh.nhs.uk

