

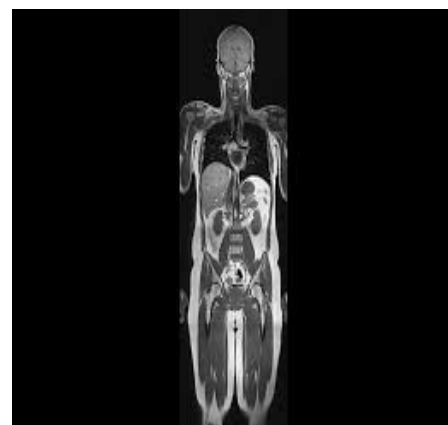
Magnetic Resonance Imaging (MRI) Easy Read Information

Information about your MRI scan

MRI scans are done at the main Norfolk & Norwich hospital, Cromer hospital or in a Mobile unit.



MRI scans take pictures of the inside of your body. This is what a head MRI scan and body MRI scan look like.



This is an MRI machine inside the scanning room. It is like a big round box with a large hole.



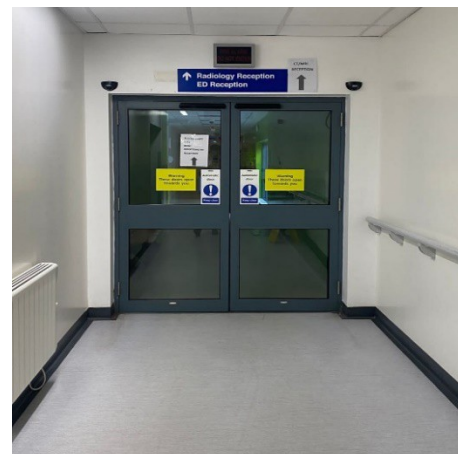
This procedure is safe and won't hurt.



When you arrive at the hospital, follow the signs to Radiology, then to the CT/MRI Reception.



Hospital staff will help you find it if you need.



When you arrive at the reception desk tell the person your name.
You can sit in this waiting area, and the hospital staff will come get you when they are ready.



You may have get changed in a changing room and be asked to wear a hospital gown. You will be asked to remove things like your jewellery, watch and phone and put into a safe locker.



The staff will talk to you and ask you some questions before you go into the MRI room.

When you go into the MRI room, you will have to lie on the scanner bed.



This bed will then move slowly into the hole. All you need to do is keep still.



When the scanner starts it makes a noise like a loud drum, so you will have to wear headphones or earplugs that the staff give you.



The Radiographer is the person making the scans for you. They will be able to see you from the computer room, through the large window. They can speak to you on the intercom.



The MRI scan can last about 20 minutes, but the staff will tell you how long.



The staff will tell you when the scan is finished. You can then get dressed and leave.
Your doctor will look at the pictures taken and tell you the results another day.

